

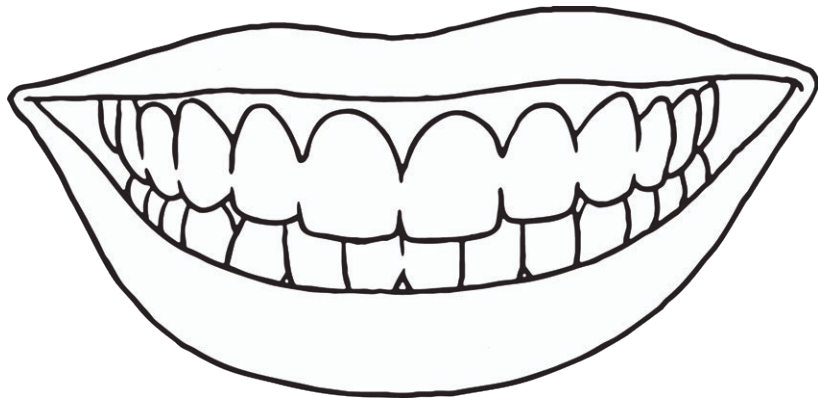
All About Teeth

Amazing Fact

If you leave a tooth in a glass of fizzy drink for 24 hours, it won't actually dissolve as has been claimed.

Challenge

Work out the clues and complete the crossword.



You could also try to find out:

- what does happen if you leave a tooth in fizzy drink for 24 hours;
- whether anything else would dissolve in 24 hours;
- how much sugar is in fizzy drinks.

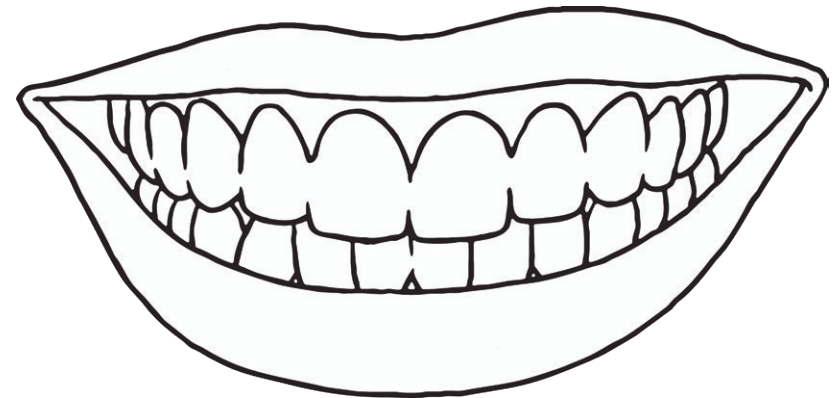
All About Teeth

Amazing Fact

If you leave a tooth in a glass of fizzy drink for 24 hours, it won't actually dissolve as has been claimed.

Challenge

Work out the clues and complete the crossword.



You could also try to find out:

- what does happen if you leave a tooth in fizzy drink for 24 hours;
- whether anything else would dissolve in 24 hours;
- how much sugar is in fizzy drinks.

All About Teeth

Use the clues to fill in and solve the puzzle below.

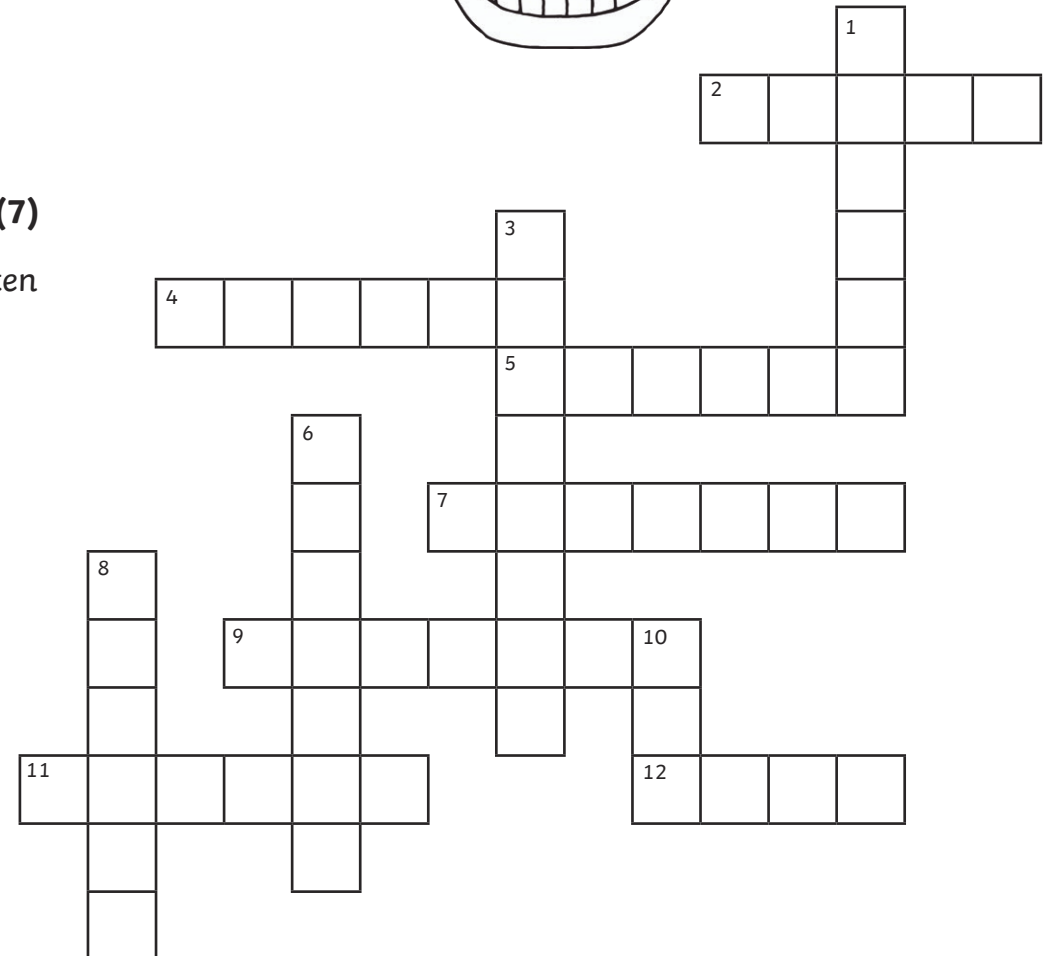


Across

2. Teeth used for grinding and chewing. **(5)**
4. A liquid found in the mouth. **(6)**
5. A type of tooth used for ripping and tearing. **(6)**
7. This person checks your teeth. **(7)**
9. The dentist might put one of these in a tooth, which has a hole. **(7)**
11. A type of molar tooth right at the back of the mouth and are often the last teeth to appear. **(6)**
12. Your first set of teeth - you have 20. **(4)**

Down

1. A layer of bacteria on your teeth - it can lead to decay. **(6)**
3. Very small, form plaque and live in your mouth. **(8)**
6. Type of tooth used for biting and cutting. **(7)**
8. A hole in a tooth. **(6)**
10. This is pink and surrounds the bottom part of the tooth. **(3)**



All About Teeth Answers

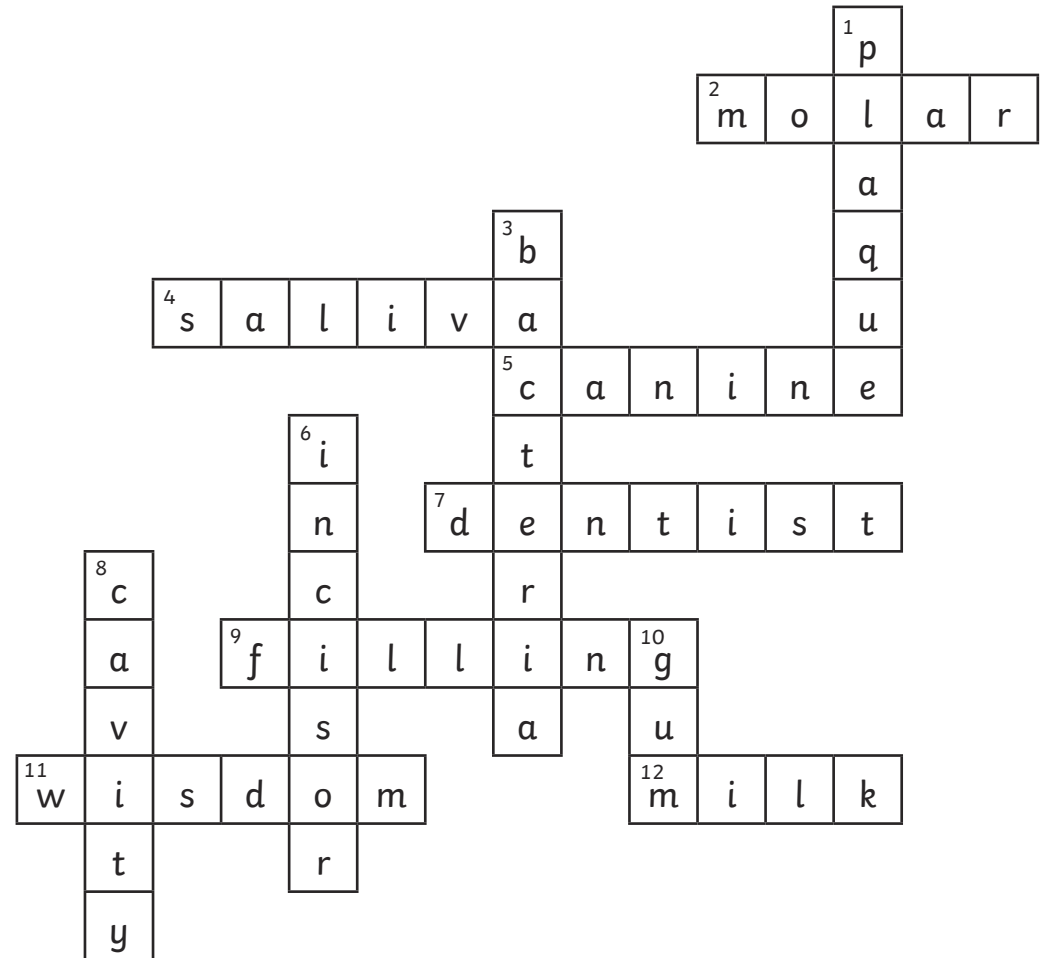
Use the clues to fill in and solve the puzzle below.

Across

- 2. molar
- 4. saliva
- 5. canine
- 7. dentist
- 9. filling
- 11. wisdom
- 12. milk

Down

- 1. plaque
- 3. bacteria
- 6. incisor
- 8. cavity
- 10. gum



Division of Decimals

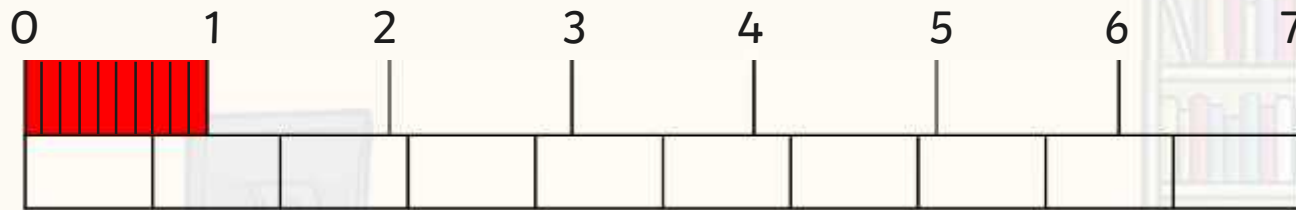


Dividing One-Digit Numbers by Ten

Fatima uses 2 number lines to explain how to divide one-digit numbers by 10.

Here is a number line showing the number 7.

Explain how this number line can be used to show $7 \div 10 = 0.7$



This bar is divided into 10 equal parts and matches the number line representing 7.

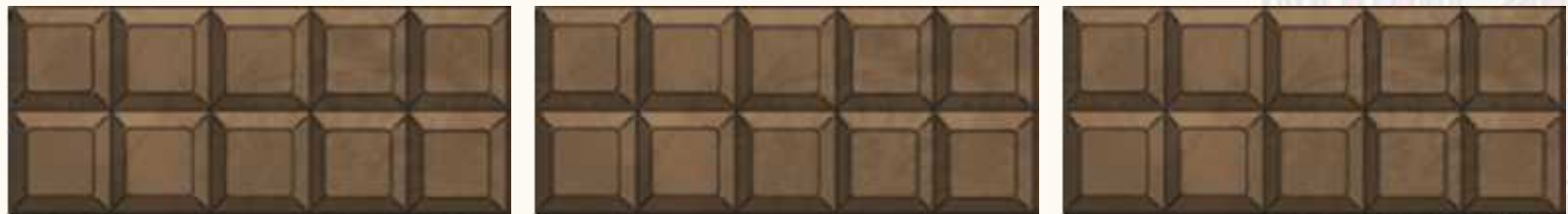
By dividing the first part of the number line into 10 equal parts, the bar shows that each tenth of 7 = 0.7.



Dividing One-Digit Numbers by Ten

Laura uses some bars of chocolate to explain how to divide one-digit numbers by 10.

Here are 3 whole bars of chocolate. Each bar has 10 sections.



Write a word problem which illustrates the calculation $3 \div 10 = .$



Dividing One-Digit Numbers by Ten **Answer**

3 whole bars of chocolate, each with 10 sections, is shared among 10 people.



How much of each bar will each person receive?
Give the answer as a decimal.

$$3 \div 10 = 0.3$$

Using Place Value

Alfie uses place value to explain how to divide one or two-digit numbers by 100.

Explain how to calculate $47 \div 100 =$ using place value.

Share your answer with a partner and make any improvements.

When dividing a number by 100, the answer can be found by moving the digits two place values to the right, making the number smaller.

Tens	Ones		Tenths	Hundredths
4	7			
	4	.	7	
	0	.	4	7

Remember to include a 0 in the ones column when the number is less than 1 (leading zero).





twinkl

twinkl
Quality Standard
Approved

Teeth and Digestion Lesson Pack LKS2

Teacher Notes

This is an introductory lesson about the different types of teeth, their functions and their role in the digestive process.

Aim

To understand the functions of the different types of teeth.

Success Criteria

- I can say how many sets of teeth humans have in their lifetime.
- I can name the different types of teeth.
- I can explain the function of each type of tooth.
- I can explain how teeth help with digestion.

Resources

- Teeth and Digestion PowerPoint
- Teeth Labelling Activity Sheet
- All About Teeth Crossword Activity Sheet
- Small mirrors

Introduction

What do you know about teeth already?

Children talk with a partner to generate ideas.

Main Lesson

Work through the PowerPoint, introducing the lesson aim and success criteria.

Look at the facts about teeth on slide 4 and discuss.

Children then look in their own mouth using a small mirror. They talk to a partner about what they can see, the different shapes of teeth and how many there are.

Read through slides 6-10. Name the different types of teeth and explain their functions.

Independent Activity

Pupils label the teeth on the differentiated activity sheets (one has key words to aid with labelling).

Discussion

Discuss what digestion is and look at the definition on slide 12.

Encourage the children to share their ideas with a partner about how teeth are part of the digestive process.

Read the facts about teeth and digestion on slide 14.

Plenary

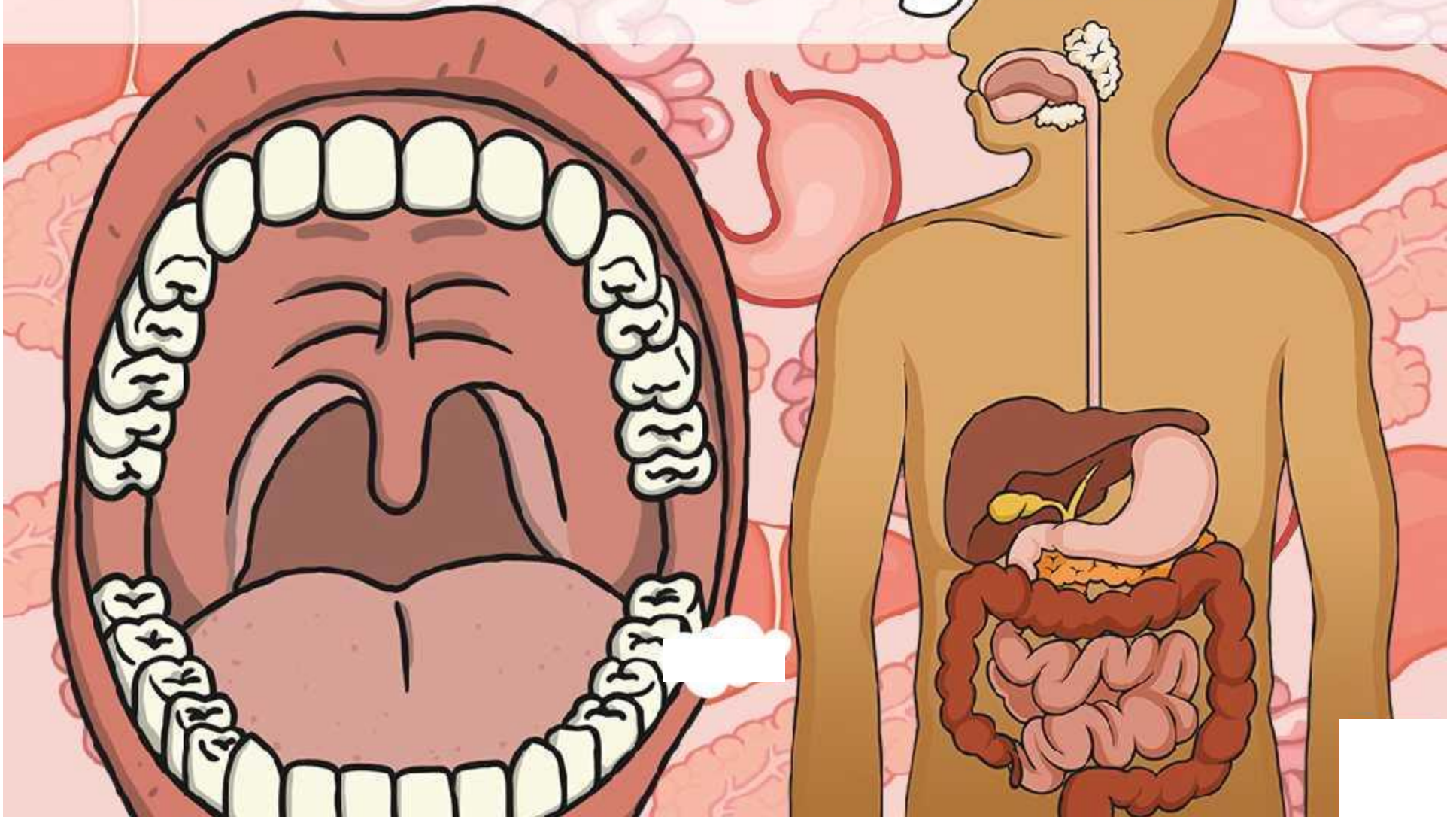
Look at the fun facts on slide 15.

Review the success criteria on slide 16.

Extra Activity

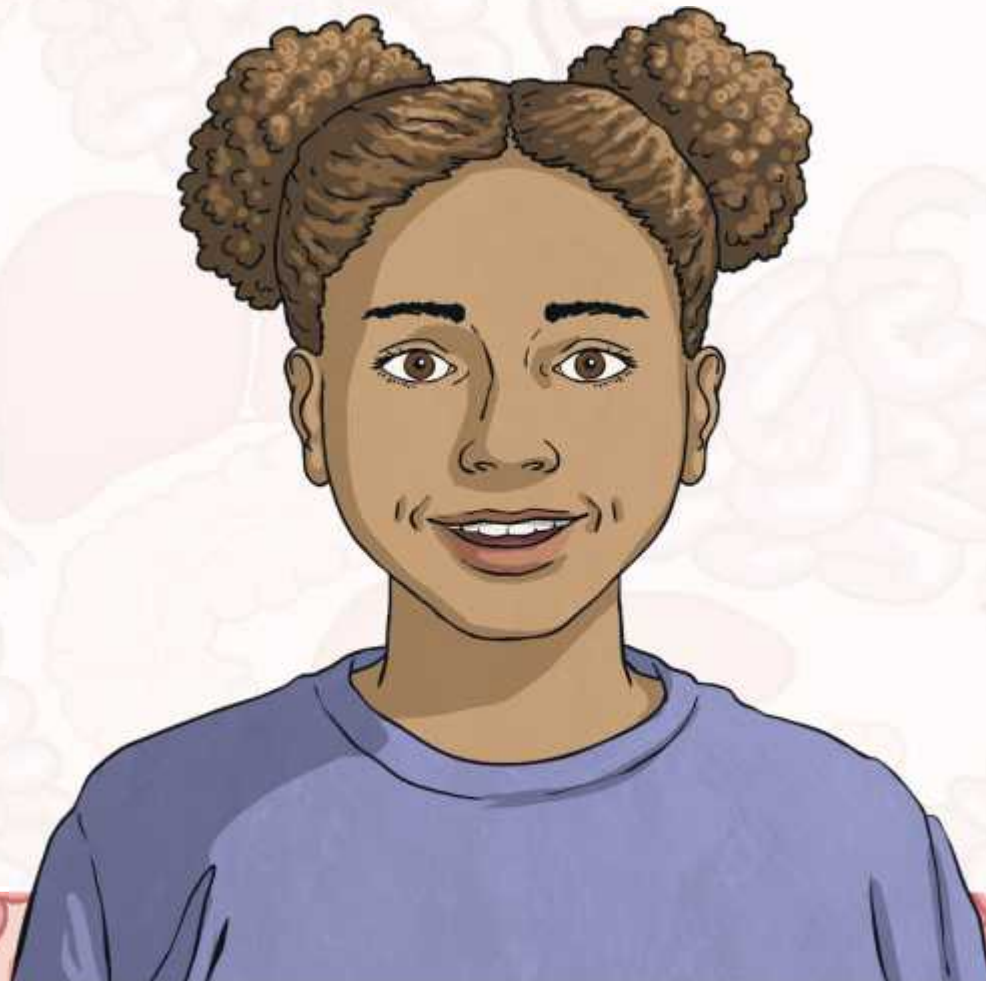
Pupils could complete the All About Teeth Crossword to consolidate their learning.

Teeth and Digestion



What do you know about teeth?

Write down or tell your partner what you know already about teeth.



Aim

- To understand the functions of the different types of teeth.

Success Criteria

- I can say how many sets of teeth humans have in their lifetime.
- I can name the different types of teeth.
- I can explain the function of each type of tooth.
- I can explain how teeth help with digestion.

Human Teeth

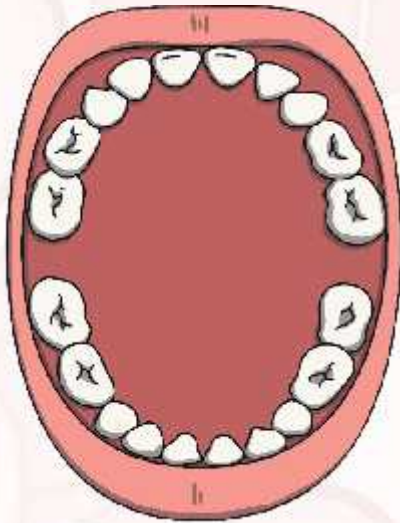
Humans have two sets of teeth in their lifetime.

The first set (milk teeth) usually begin to grow when a baby is about six months old.

Children begin to lose these teeth at around the age of six, when new (adult) teeth begin to grow.

Most children have a full set of milk teeth by the age of three.

A child usually has a full set of adult teeth by their mid-teens.



Let's Investigate!

Talk to a partner about the shape of the teeth that you can see.

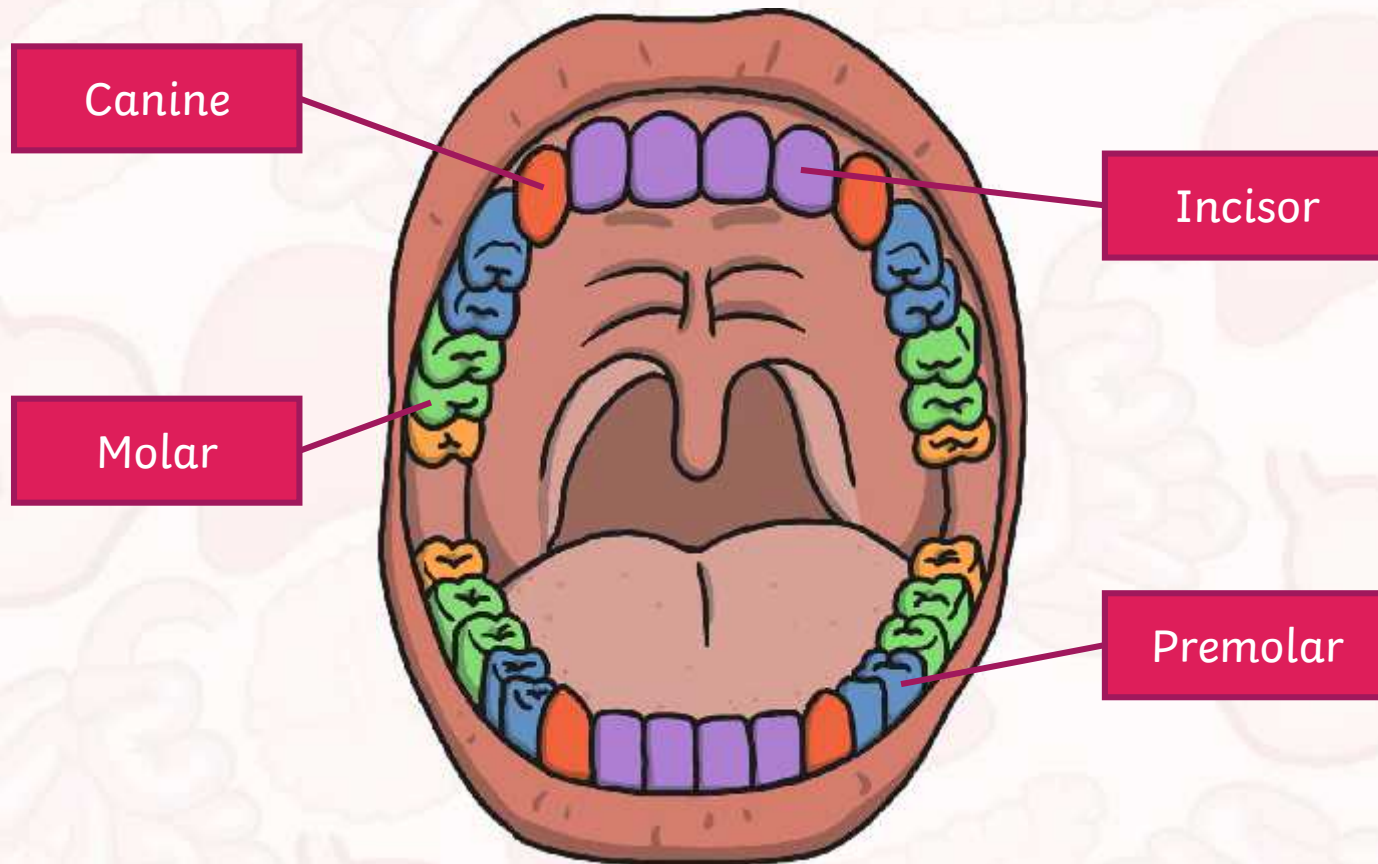
How many teeth do you have?

What types of teeth can you see?



Types of Teeth

Humans have four different types of teeth and each one has a different role.



Incisors

We have eight incisors – they are the middle four teeth on the upper and lower jaws.

Their function is to bite off or slice food.



Canines

We have four canines – they are sharp and pointy and sit next to the incisors.

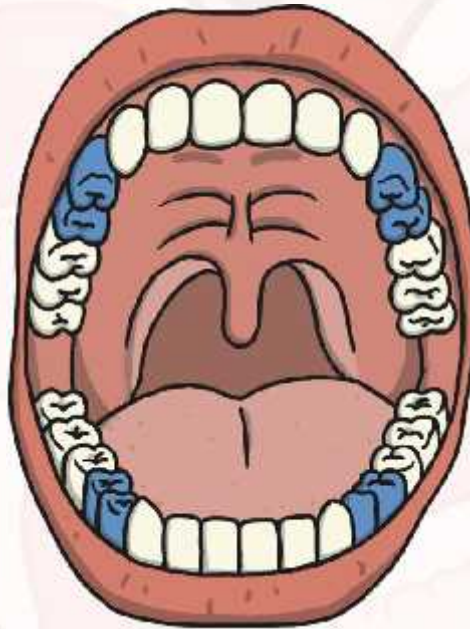
Their function is to tear food.



Premolars

Humans have premolars (the teeth between the canines and molars).

The function of premolars is to crush and tear food.



Molars

Humans have eight molars (the large, flat teeth at the back of the jaw).

Molars grind down food before it is swallowed.



How Do Teeth Help with Digestion?

What is digestion?



Think,
pair,
share.

Digestion

Digestion is the action of breaking down food so that it can be absorbed by the body.



Let's Think!

How do teeth help with digestion?



Think,
pair,
share.

Teeth and Digestion

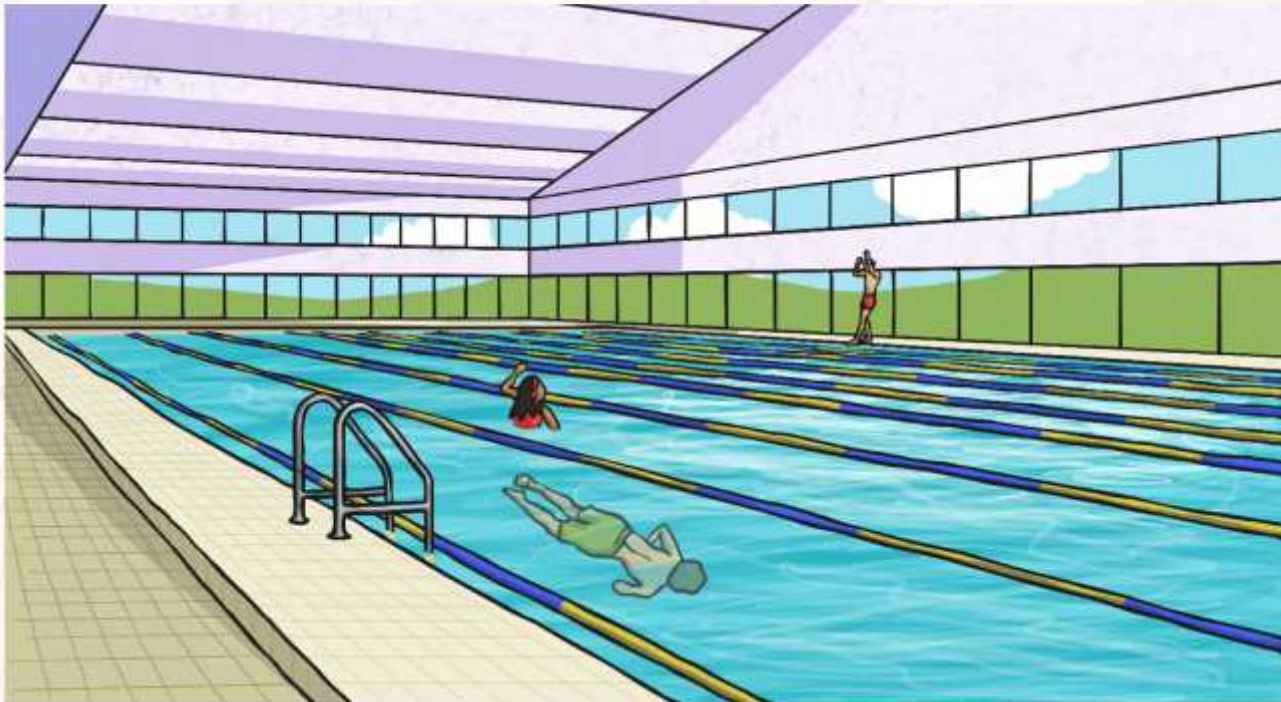
- Teeth help with the first stage of digestion.
- Food is chewed and broken down by teeth.
- The tongue and the molars work together to roll the food into a ball so that it can be swallowed.
- Saliva is produced to soften the food and to make swallowing easier.

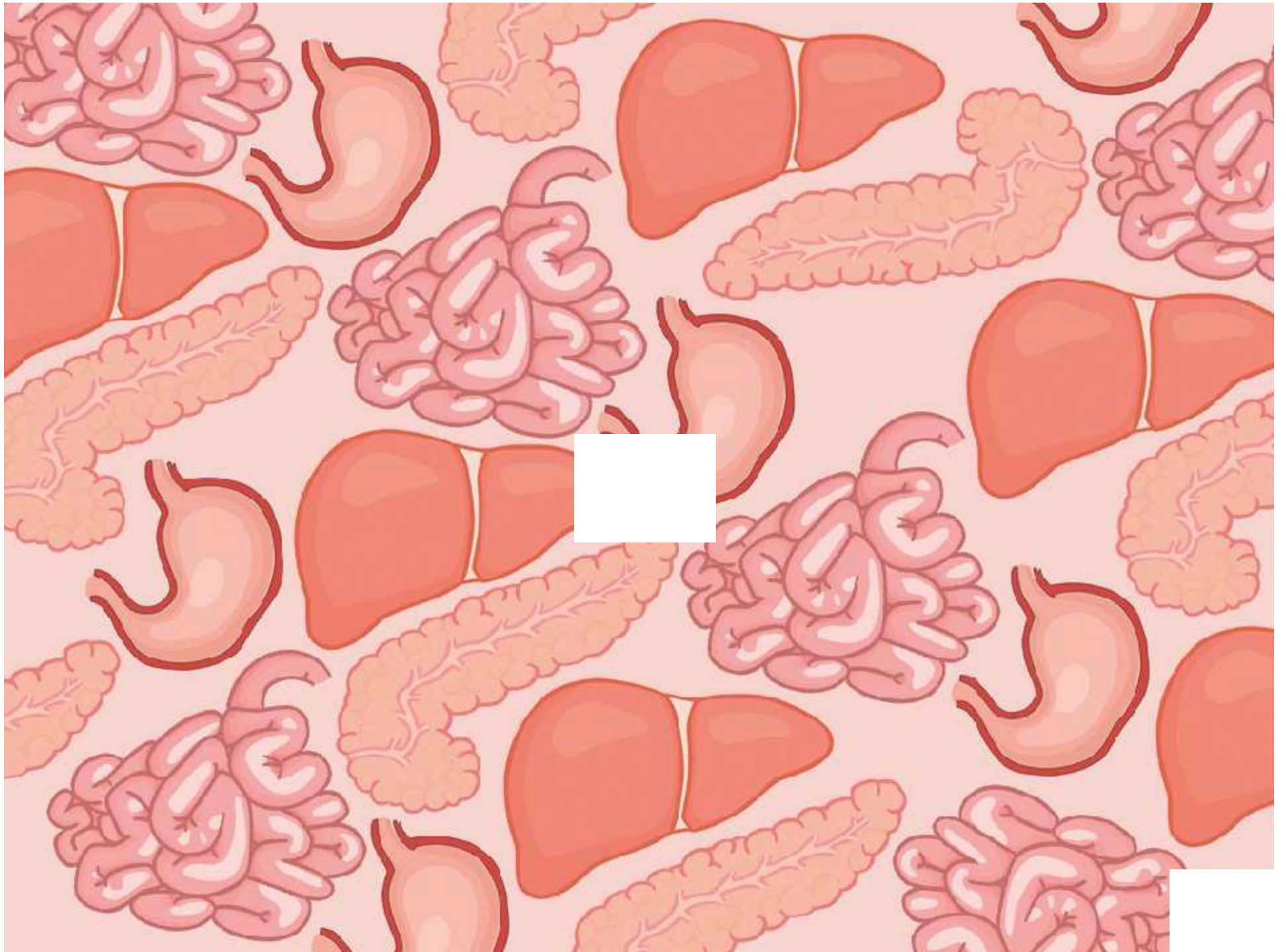


Did You Know...?

Your teeth are the hardest substance in your body!

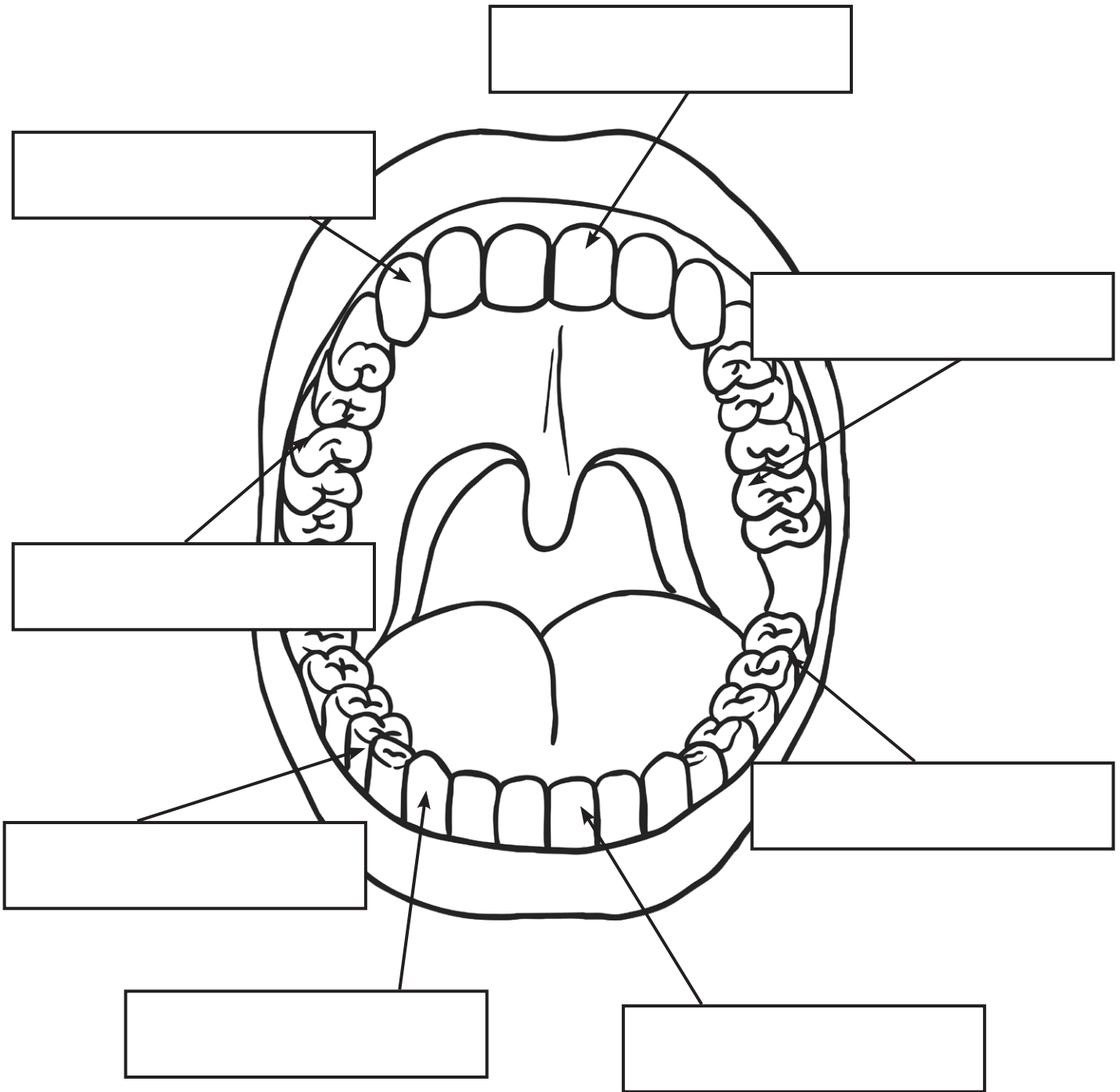
Your mouth produces two swimming pools' worth of saliva in your lifetime!





Teeth Labelling

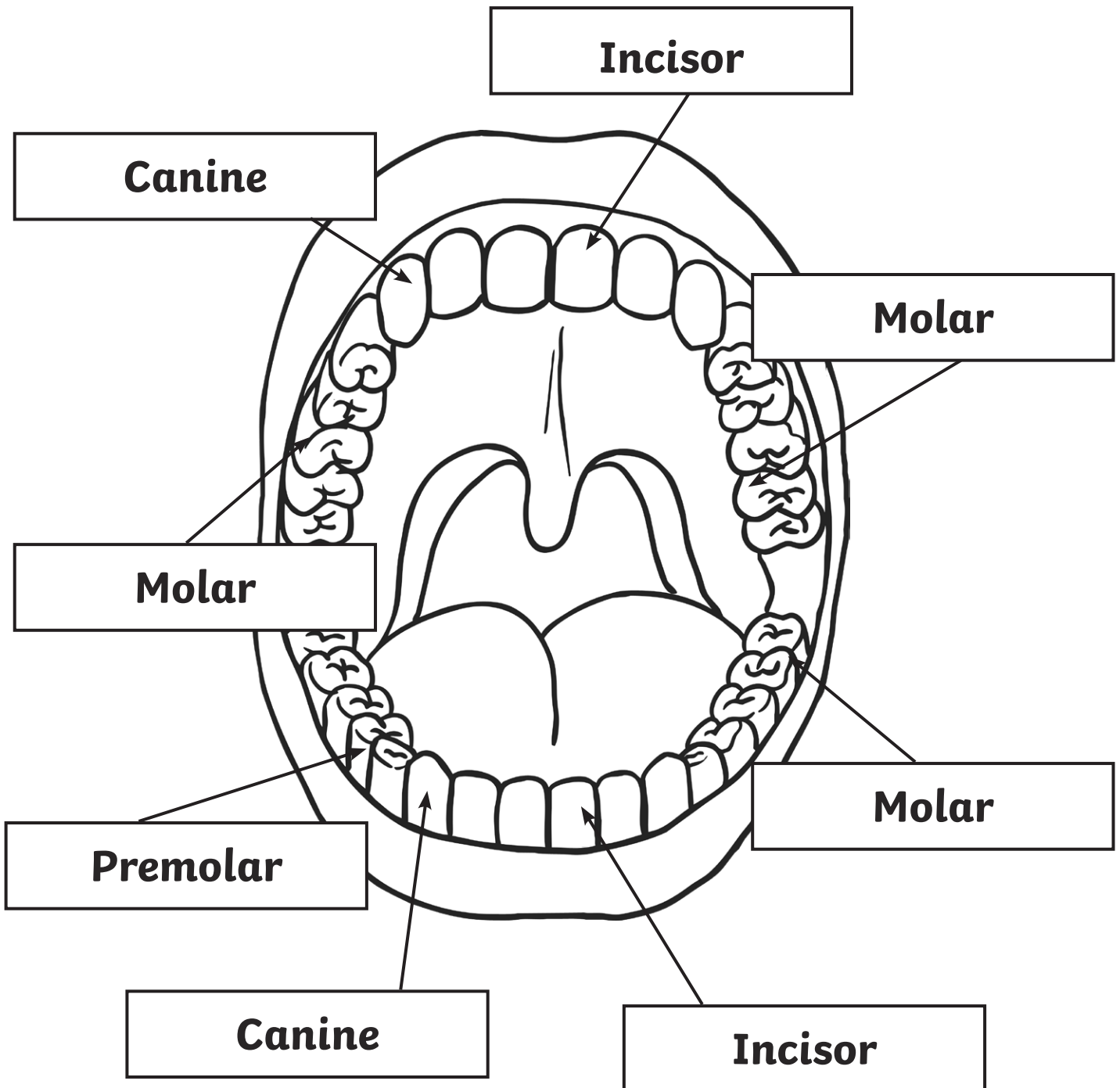
Label the teeth in this diagram using the words at the bottom of the page to help you.



Words to Use			
Premolar	Molar	Canine	Incisor

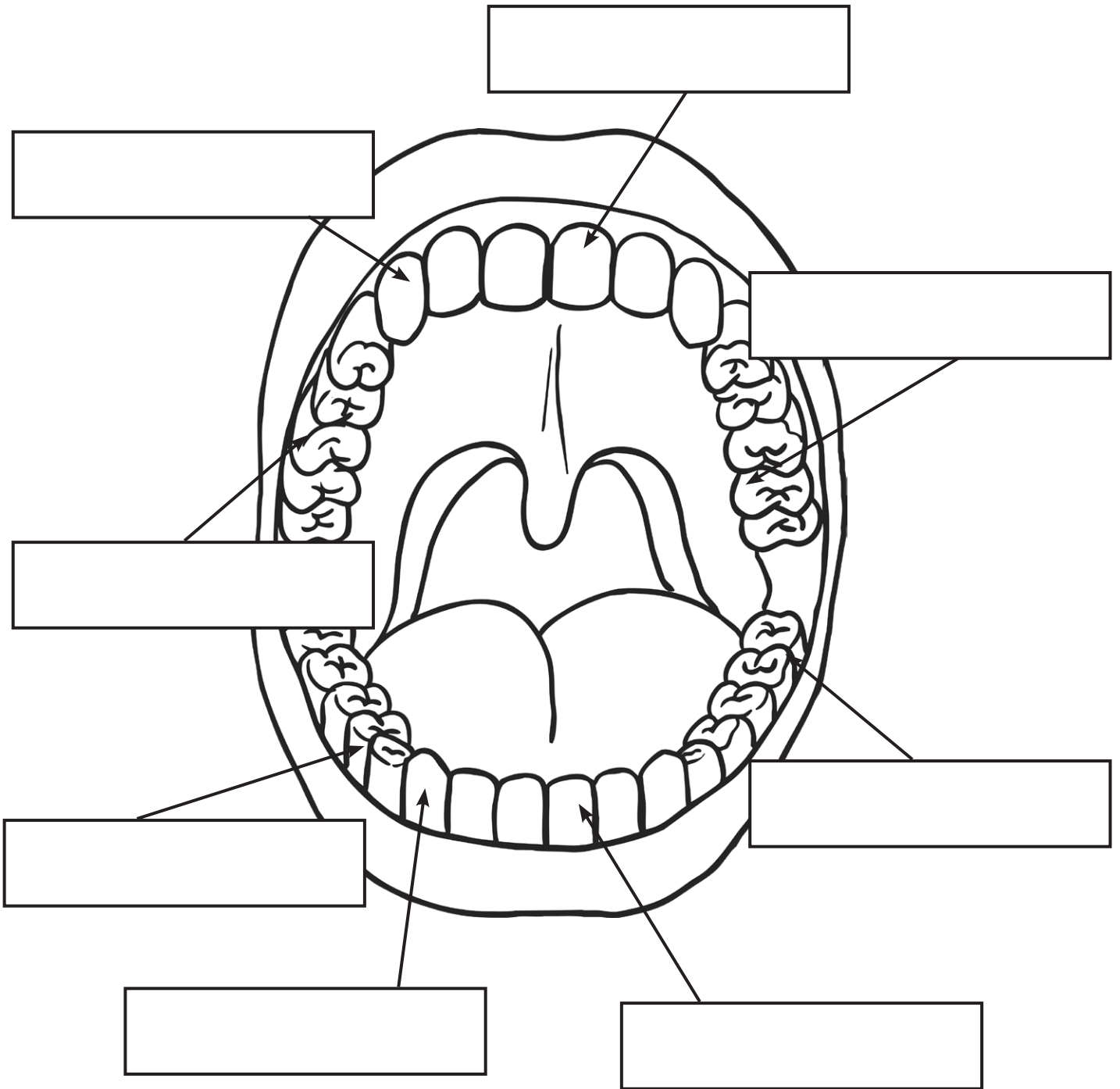
Teeth Labelling Answers

Label the teeth in this diagram using the words at the bottom of the page to help you.



Teeth Labelling

Label the teeth in this diagram.



Teeth Labelling Answers

Label the teeth in this diagram.

